



MAXSEA

MaxSea X7 Software

ECS — Electronic Chart System

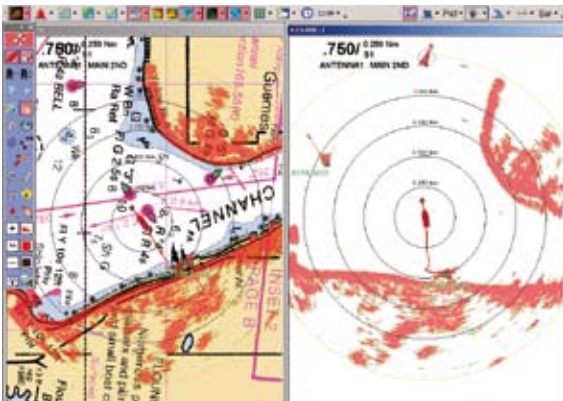


A powerful ECS that leverages the outstanding features of Furuno's 2xx7 Series Radar...

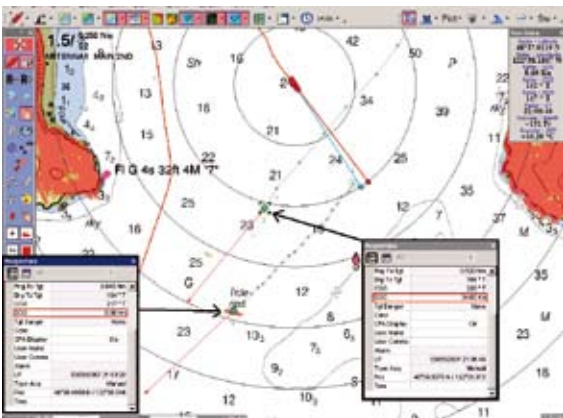
- High resolution digital Radar overlay.
- Display AIS & ARPA targets from Radar and easily check MMSI number, length, position, speed, CPA, and destination of acquired vessel.
- Control up to two Radars from the computer; including Gain, Sea Clutter, Rain Clutter and presets.
- Toggle between two Radars with a simple click of an icon.
- Compatible with C-Map™ CM93 Charts.
- Unlimited Routes, Waypoints and Marks.
- Free Weather forecasts and oceanic data displayed directly on navigation charts.
- 3D bathy view is the most advanced view of the ocean floor available (X7 Explorer only).
- Personal Bathy Generator (PBG) continuously updates 3D bathy information using the ship's depth sounder (X7 Explorer only).
- Easy installation — a simple Ethernet cable allows MaxSea X7 to receive NavData, ARPA targets, and Radar echo without additional interfaces.

FURUNO

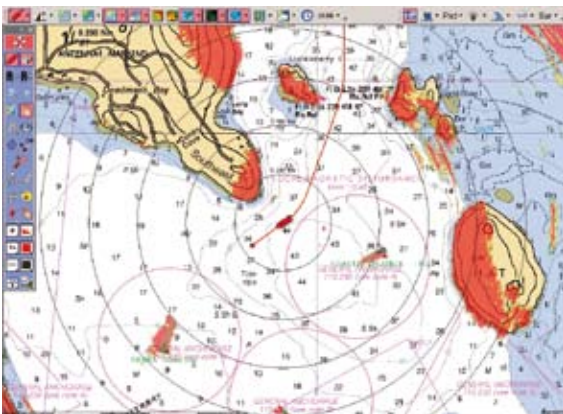
MaxSea X7 Features



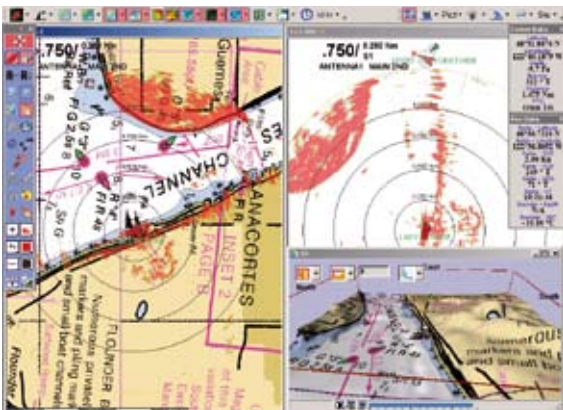
Dual Screen Capability



Acquire ARPA targets directly in MaxSea.



AIS targets with "true" representation.



Show a 3D view of the ocean floor on X7 Explorer.

MaxSea X7 Commander & Explorer Features:

Standard Features	Commander	Explorer
Waypoints/Routes	●	●
Seamless electronic chart navigation/plotting	●	●
Personal Bathy Generator (PBG) Updates 3D in real time	n/a	●
Ground Discrimination Software module (requires 3rd party hardware - SeaScan/RoxAnn)	n/a	optional
Advanced unlimited simultaneous user data layer access	●	●
Loran TD display	●	●
Track recording	●	●
Advanced event recording	●	●
Worldwide Tidal Data (tidal height)	●	●
Navigation Logbook Software module	●	●
Weather Overlay Software module	●	●
Mobiles module (ARPA, AIS, GPS Buoys) & AIS Minimum Keyboard Display (MKD)	●	●
MaxShell Windows Desktop Manager	●	●
Worldwide Electronic Planning Chart	●	●
FAR 2x7 control	●	●
Radar Overlay	●	●
Forward Looking Depth Profile	n/a	●

System Requirements

Your PC must meet the following system requirements in order to work with MaxSea X7. Please verify these requirements before installing.

- **Windows 2000 SP4 or XP*** (*not for use with Media Center, XP 64-bit Editions, or Vista)
- 1.5 GHz Processor (2 GHz recommended)
- CD-ROM drive - for installing software, DVD-ROM drive - for installing charts.
- Serial or USB port(s) - for connecting additional navigation equipment
- Parallel or USB port for hardware key
- 700 MB of hard drive space for software (up to 5 GB for charts)
- Graphic card:128MB - Compatible with DirectX9c
- Ethernet 10/100 Base-T connection
- Memory requirements :

Operating System :	System Memory:
Windows® 2000	512 MB (1 GB Recommended)
Windows® XP	1 GB (2 GB Recommended)

- **Note about system requirements :**

For the best performance we advise you to follow the "recommended" guidelines. MaxSea X7 is an advanced software program which makes optimal use of faster computers with more memory.

All specifications subject to change without notice